

Test report is for reference only.

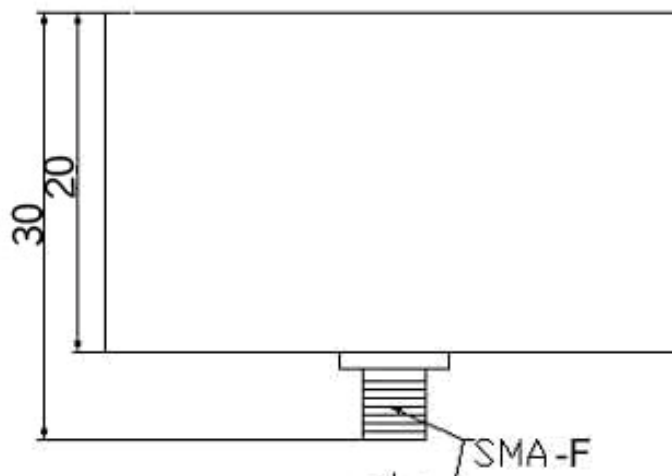
TEST REPORT
For
C & Q TXLX-180265



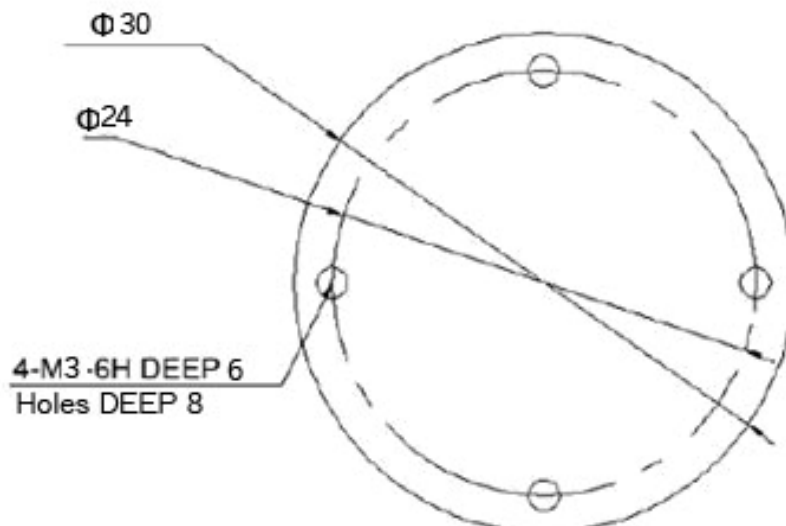
Technical Specification

Polarization	RHCP or LHCP
Frequency Range(GHz)	18-26.5
Gain(dBi)	-4 min
Axial Ratio(dB)	4 max
VSWR	2.5 : 1 Typ.
Connector	SMA-Female
Size(mm)	$\phi 30 \times 30$
Net Weight(Kg)	0.025

Outline Drawing



Mounting Holes



Test Instrument

Anritsu37369D Vector Network Analyzer, ROHDE & SCHWARZ SMR40, HP8564E

Test Result

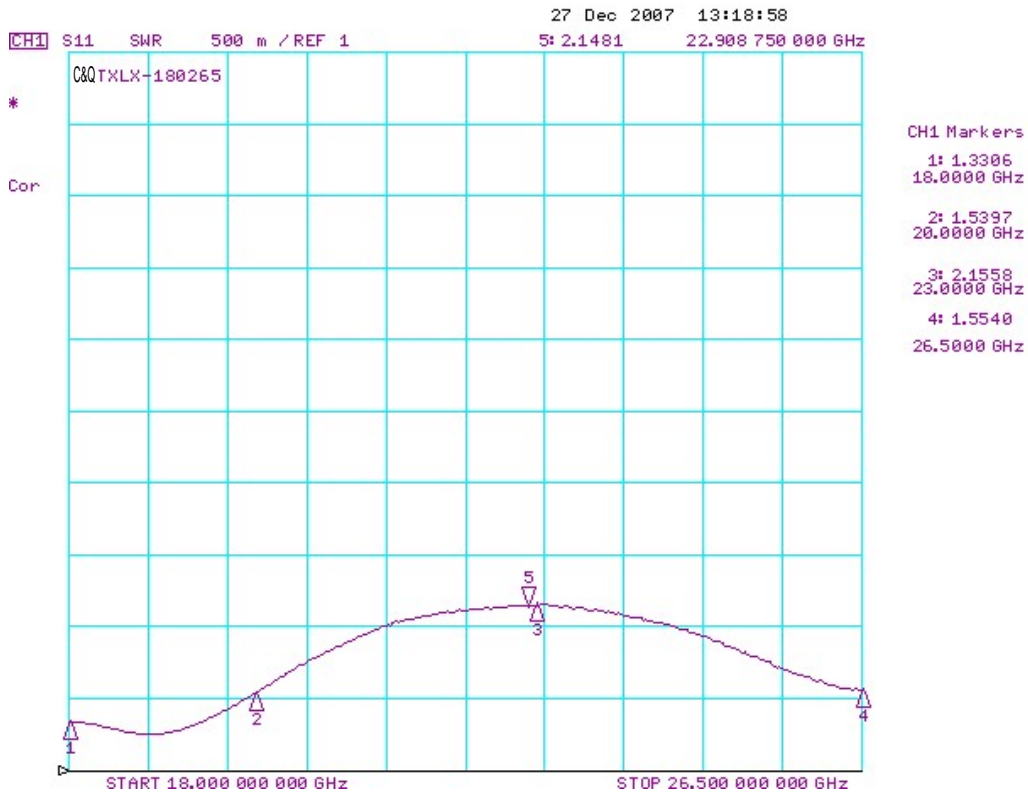
1. Gain

Frequency(GHz)	18.0	19.0	20.0	22.0	24.0	26.5
Gain(dBi)	2.09	0.73	0.46	-0.30	-1.10	-3.06

2. Axial Ratio

Frequency(GHz)	18.0	19.0	20.0	22.0	24.0	26.5
Axial Ratio (dB)	1.50	1.34	1.17	1.84	1.50	1.83

3. VSWR



4. Pattern

